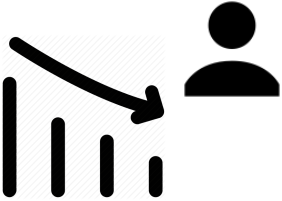




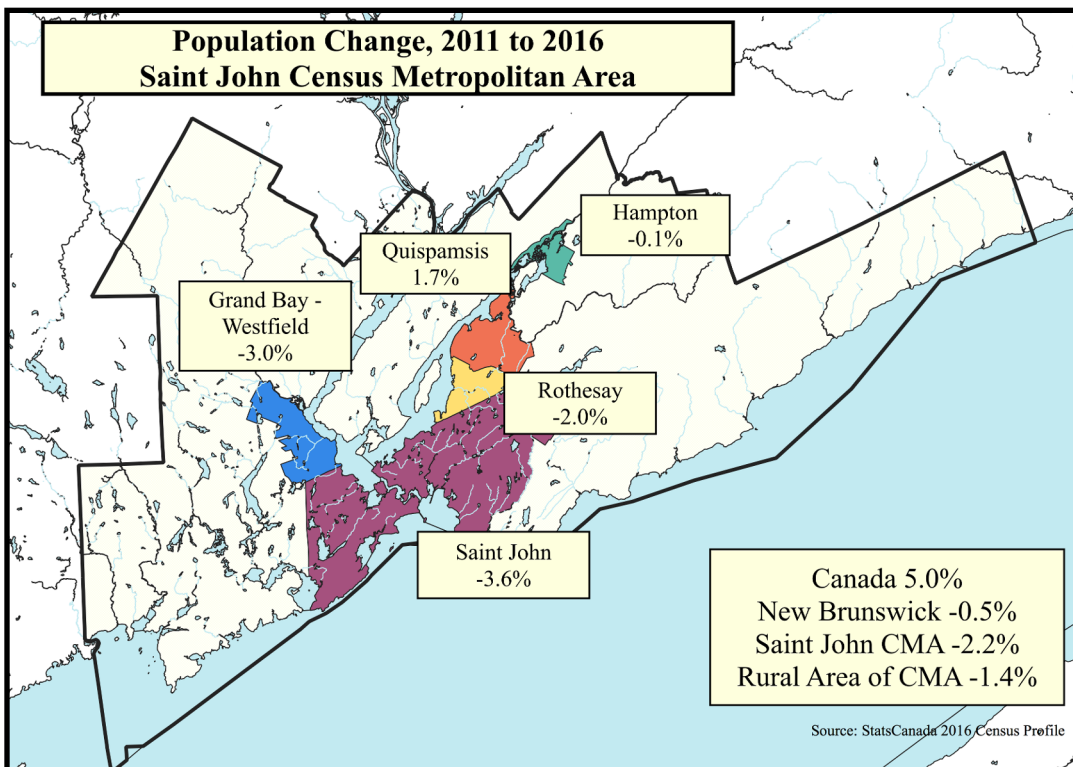
Community Reflections



Population change in the CMA

Population change over two decades: 1996-2016

	Canada	New Brunswick	Saint John CMA	Saint John City	Quispamsis	Rothsay	Hampton	Grand Bay - Westfield
Population; 2016	35,151,728	747,101	126,202	67,575	18,245	11,659	4,289	4,964
Population; 1996	28,846,761	738,133	125,705	72,494	13,579	11,470	4,081	4,880
Percentage Change	21.9	1.2	0.4	-6.8	34.4	1.6	5.1	1.7



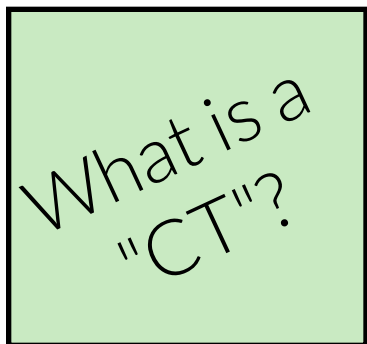
FROM 2011 TO 2016:

The population of the Saint John CMA declined by 2.2%

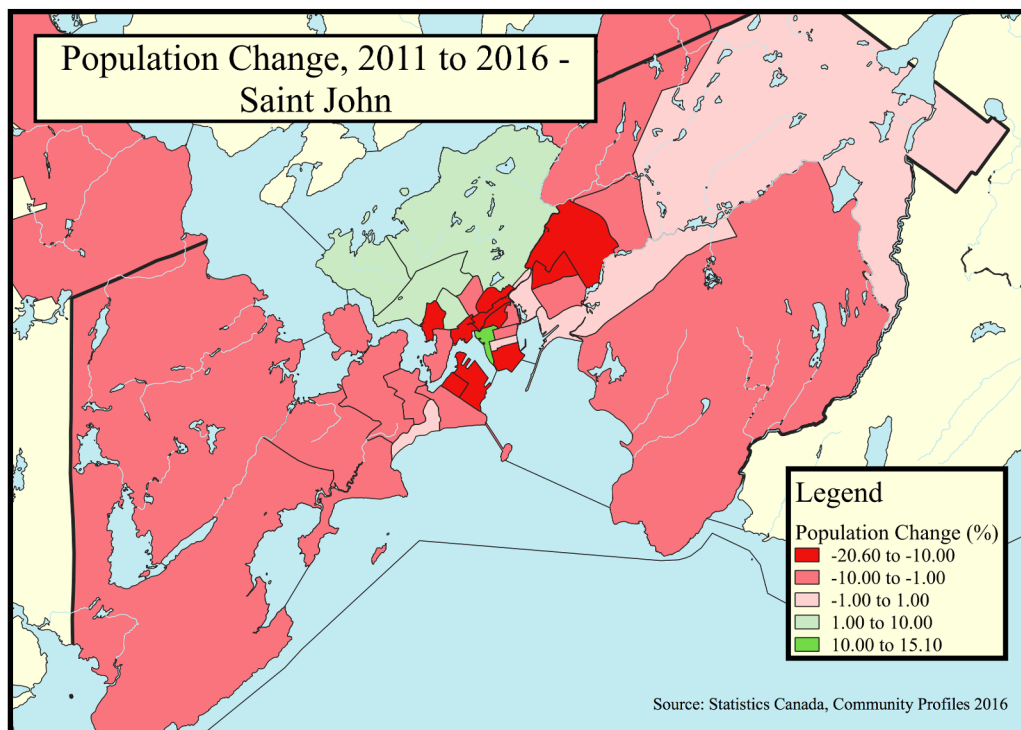
Populations in all towns declined with the exception of Quispamsis.



A closer look at the city... population change in Saint John by Census Tract (CT)



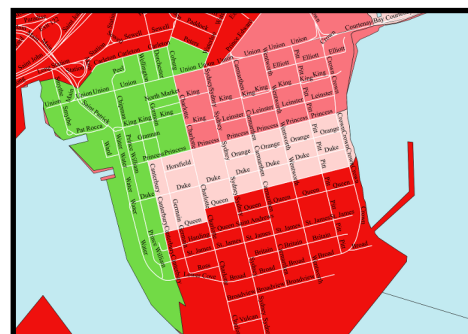
- A census tract (CT) is a small geographic area within a CMA
- CT's have a population of 2,500 to 8,000 people
- This is the most detailed level of data available for population change



Areas of population growth in Saint John

South End

The South End of Saint John is an interesting area when it comes to population change. In one census tract (stretching from Market Square to the end of Water Street) the population grew by 15.1%. Meanwhile, two neighbouring CT's in this area (Queen Street down to Broadview Street and the bordering CT in Waterloo Village) experienced a decline of 14.0% and 20.6% respectively.



Millidgeville and Crescent Valley

Although Millidgeville and Crescent Valley did not grow at the same rate as the Waterfront area in the South End, it was one of the only areas in Saint John to grow. Newcomer resettlement likely contributed to this increase, given that 845 newcomers between 2011 and 2016 now call this area home.

