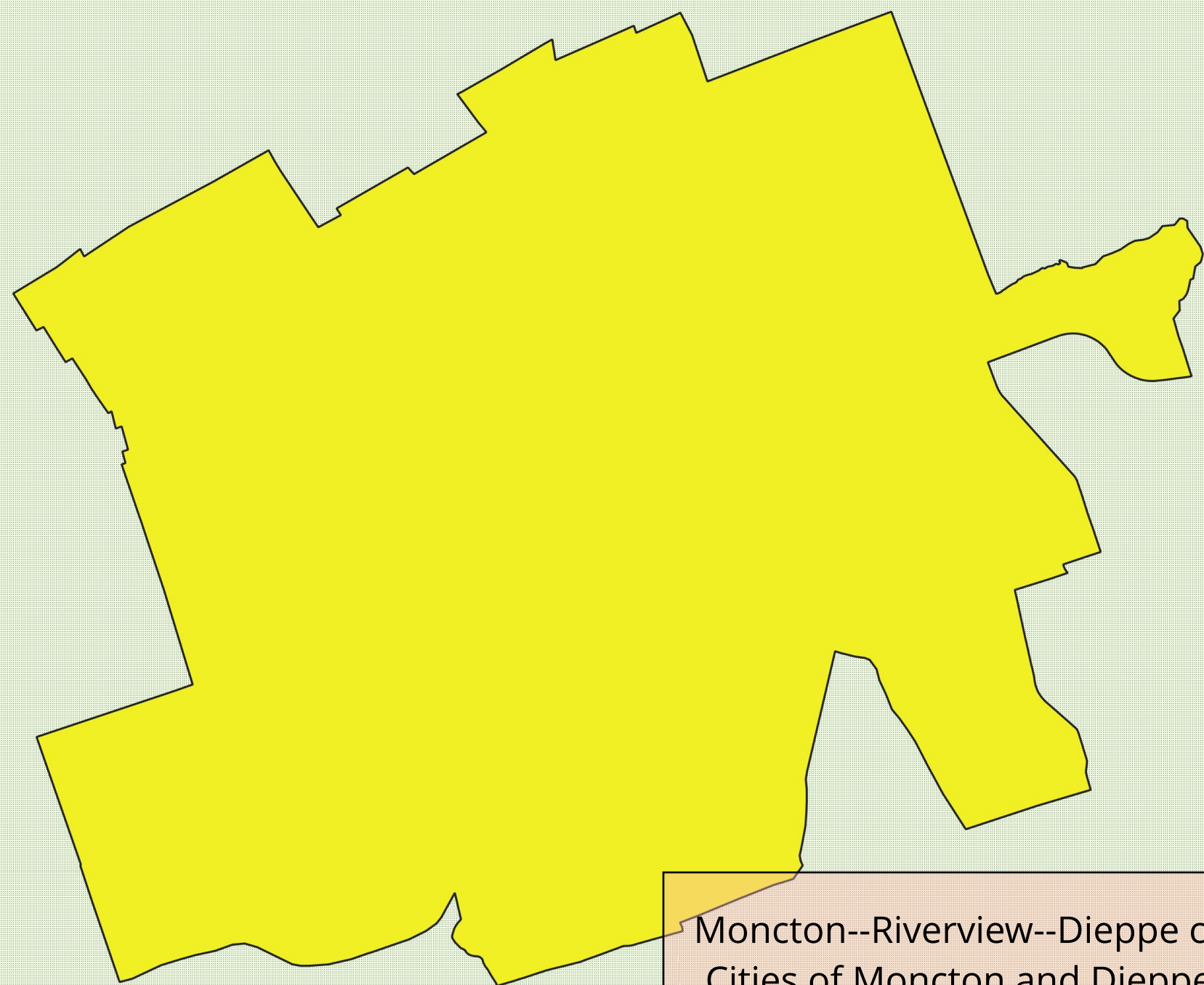




MONCTON--RIVERVIEW--DIEPPE



Moncton--Riverview--Dieppe covers the Cities of Moncton and Dieppe and the Town of Riverview.

Population(2016):
92,666

Population Change
(2011-2016):
+3,182

Population Density:
590.2 people per
Km²

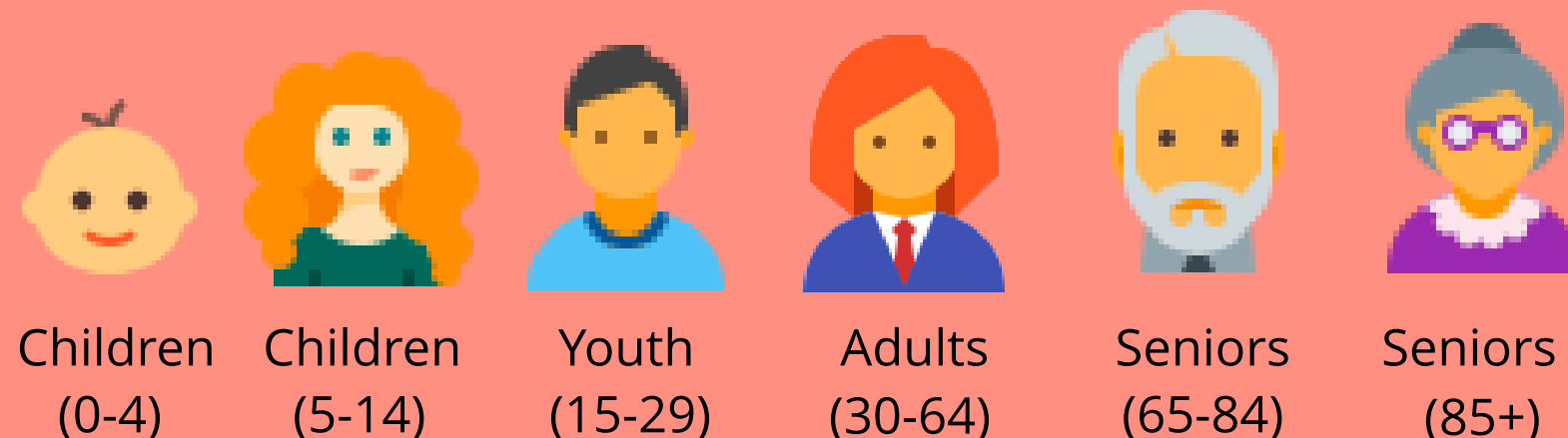
Overall Poverty Rate

19.0%

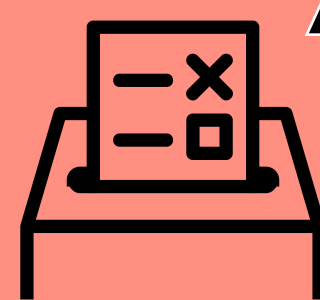
Child Poverty Rate

24.5%

Population by Age Group



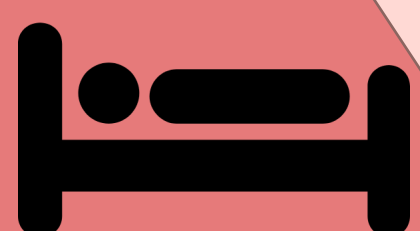
40.8%
are renters
rather than
homeowners



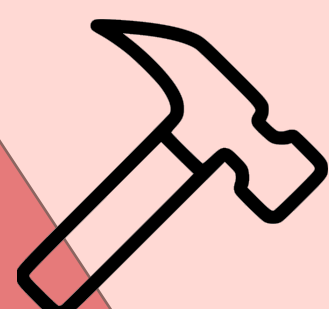
72.7%
of eligible
voters cast a
ballot in the
2015 Election.

Core Housing Need

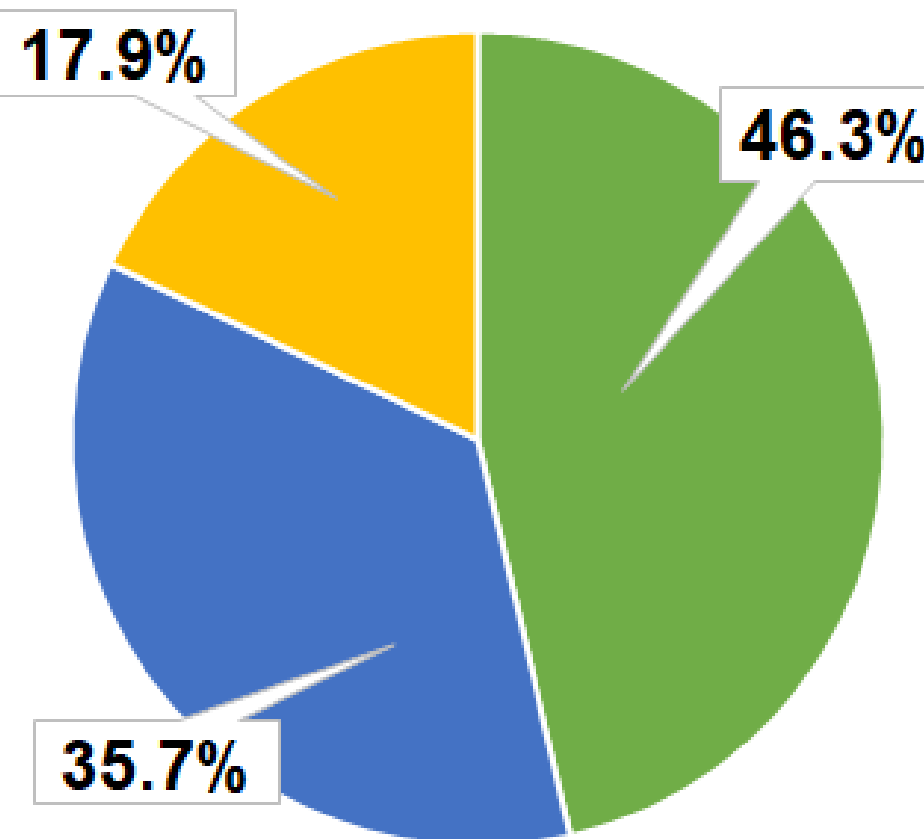
2.5%
of households
are
unsuitable



5.2%
of households
are
inadequate
(in need of major
repair)



24.3%
of households
are
unaffordable



Family Composition

- Couples without Children
- Couples with Children
- Lone-parent Families

17.5%
of households
moved over
the past year



43.4%
of households
moved over
the past five
years



Profiles of New Brunswick's Federal Ridings, 2016 Census of the Population												
		New Brunswick	Acadie--Bathurst	Beauséjour	Fredericton	Fundy Royal	Madawaska--Restigouche	Miramichi--Grand Lake	Moncton--Riverview--Dieppe	New Brunswick Southwest	Saint John--Rothesay	Tobique--Mactaquac
Demographic Characteristics	Population (2016)	747,101	77,791	82,292	83,303	79,943	60,378	57,405	92,666	65,287	79,363	68,673
	Population change (since 2011)	-4,070	-1,549	1,876	1,544	557	-2,162	-1,938	3,182	-910	-2,711	-1,959
	Population density	10.5	15.4	20.6	55.4	11.1	5.2	3.4	590.2	6.6	203	4.7
	0 to 4 years old	34,365	2,660	3,580	4,435	4,050	2,220	2,325	4,600	3,210	3,815	3,475
	5 to 14 years old	76,130	6,250	8,040	8,990	9,695	5,400	5,435	9,225	7,100	8,250	7,735
	15 to 29 years old	121,295	10,380	11,340	18,165	12,535	8,230	8,400	17,730	9,900	14,205	10,395
	30 to 64 years old	366,530	39,775	42,395	38,080	39,415	30,390	28,065	43,930	32,490	38,035	33,970
	65 to 84 years old	131,165	16,630	15,100	11,880	12,890	12,515	11,745	14,560	11,265	12,900	11,690
	85 + years old	17,620	2,095	1,845	1,745	1,370	1,620	1,435	2,625	1,320	2,165	1,405
	Average age	43.6	47.4	44.7	40.1	41.9	46.7	45.8	42.1	43.4	42.8	43.1
Median age	45.7	51.2	47.2	39.1	44.1	50.9	49.3	41.9	46.1	44	45.6	
Family Characteristics	Couples without children	47.4%	49.1%	51.0%	44.5%	45.6%	51.4%	47.6%	46.3%	48.4%	42.8%	48.0%
	Couples with children	36.4%	33.0%	36.0%	39.6%	41.2%	32.9%	33.0%	35.7%	37.7%	35.7%	37.5%
	Lone-parent Families	16.2%	17.9%	13.0%	15.9%	13.3%	15.6%	19.4%	17.9%	14.0%	21.6%	14.5%
Primary Language	English	67.7%	16.5%	35.9%	90.7%	95.6%	18.3%	76.0%	65.4%	96.0%	94.8%	83.3%
	French	31.6%	83.1%	63.3%	8.0%	4.1%	81.1%	23.6%	33.1%	3.8%	4.0%	16.4%
	English and French	0.4%	0.4%	0.6%	0.5%	0.2%	0.6%	0.3%	1.0%	0.1%	0.3%	0.2%
	Neither English nor French	0.3%	0.1%	0.2%	0.8%	0.1%	0.1%	0.1%	0.6%	0.1%	0.8%	0.1%
Cultural Characteristics	Immigrants	4.6%	1.4%	3.7%	8.7%	3.4%	2.8%	1.9%	6.9%	4.9%	6.3%	4.5%
	Recent immigrants (2011-2016)	1.3%	0.3%	0.6%	3.1%	0.6%	0.5%	0.2%	2.7%	0.7%	2.3%	0.8%
	Aboriginal Identity	4.0%	4.0%	3.9%	4.8%	1.7%	5.2%	10.5%	2.5%	3.0%	2.0%	4.8%
	Visible Minority	3.4%	1.0%	2.0%	7.9%	1.7%	1.5%	0.9%	6.6%	1.4%	6.5%	1.5%
Housing Characteristics	Owner	74.4%	79.2%	83.0%	62.8%	88.3%	76.4%	78.7%	59.2%	87.3%	59.1%	80.5%
	Renter	25.0%	20.6%	16.7%	36.2%	11.7%	23.4%	17.6%	40.8%	12.1%	40.9%	18.7%
	Band Housing	0.6%	0.2%	0.3%	1.0%	0.0%	0.2%	3.7%	0.0%	0.6%	0.0%	0.8%
	Housing built before 1960	24.0%	19.3%	20.5%	19.6%	17.9%	30.5%	26.8%	20.7%	26.7%	35.8%	25.1%
	Housing built in the last 10 years	12.5%	7.9%	17.9%	15.4%	15.4%	5.7%	7.6%	18.7%	11.7%	8.5%	11.6%
Core Housing Need	Unsuitable	2.3%	1.9%	2.2%	2.9%	2.0%	1.7%	2.6%	2.5%	2.2%	2.4%	2.6%
	Inadequate	8.3%	9.3%	7.7%	6.6%	7.7%	8.3%	12.5%	5.2%	9.7%	8.6%	10.1%
	Unaffordable	16.8%	14.8%	13.3%	20.3%	12.6%	15.9%	13.4%	24.3%	12.0%	23.0%	13.9%
Level of Education	Less than High School	13.8%	24.9%	16.3%	7.3%	9.0%	19.6%	20.3%	9.4%	11.7%	10.5%	13.6%
	High School Diploma (or GED)	28.5%	23.5%	25.4%	26.0%	31.1%	27.6%	31.6%	26.9%	31.4%	30.9%	33.1%
	Post-secondary Certification	57.6%	51.7%	58.4%	66.8%	59.9%	52.8%	48.2%	63.7%	56.9%	58.5%	53.2%
Movers	Moved in the past year	11.4%	7.6%	9.4%	18.0%	8.7%	8.4%	8.0%	17.5%	8.8%	14.8%	9.3%
	Moved in the past five years	30.9%	22.2%	29.0%	43.7%	26.1%	23.7%	21.9%	43.4%	26.6%	37.8%	26.8%
Poverty Rates, 2017 (CFLIM-at)	Overall	17.2%	18.6%	13.3%	17.1%	12.6%	18.3%	20.7%	19.0%	15.3%	20.6%	17.6%
	Child (0-17)	22.0%	22.5%	15.1%	21.8%	16.1%	22.3%	29.0%	24.5%	20.1%	28.7%	22.3%
	Senior (65+)	15.4%	22.7%	14.7%	9.3%	11.2%	19.5%	19.0%	12.5%	13.4%	13.5%	16.6%
Voter Turnout	Election 2015	74.4%	76.8%	79.6%	75.7%	74.6%	74.0%	75.8%	72.7%	73.7%	68.8%	71.4%
	Election 2011	66.2%	70.3%	71.2%	64.2%	64.6%	69.8%	71.4%	65.2%	64.7%	58.0%	63.9%
	Election 2008	62.9%	68.3%	69.2%	62.1%	61.1%	66.8%	65.8%	61.3%	61.2%	54.0%	59.7%
Source: 2016 Census Community Profile, Federal Electoral Districts (2013 Configuration), New Brunswick. Statistics Canada, Census Division. Ottawa: Canada.												