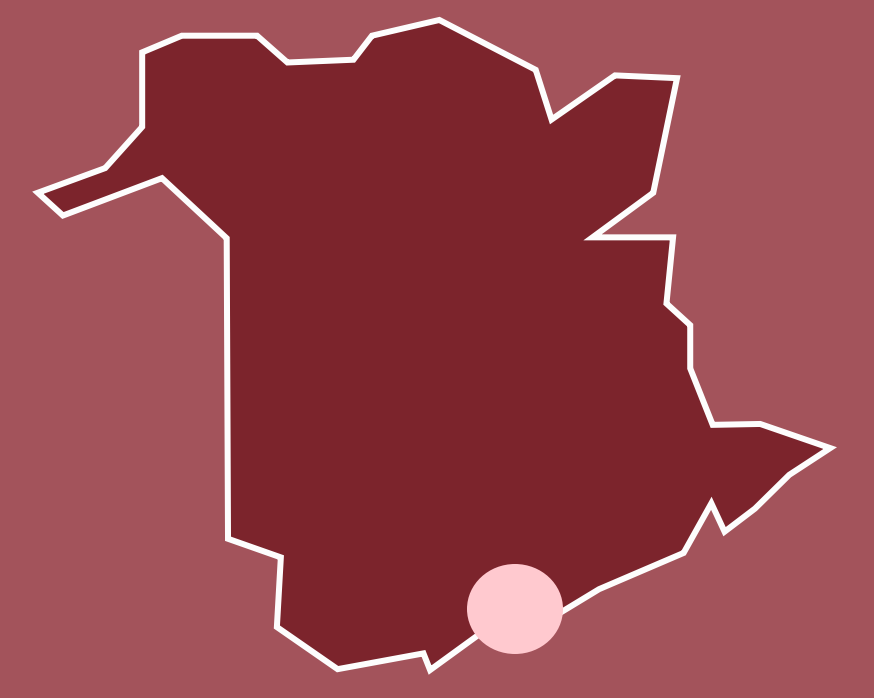


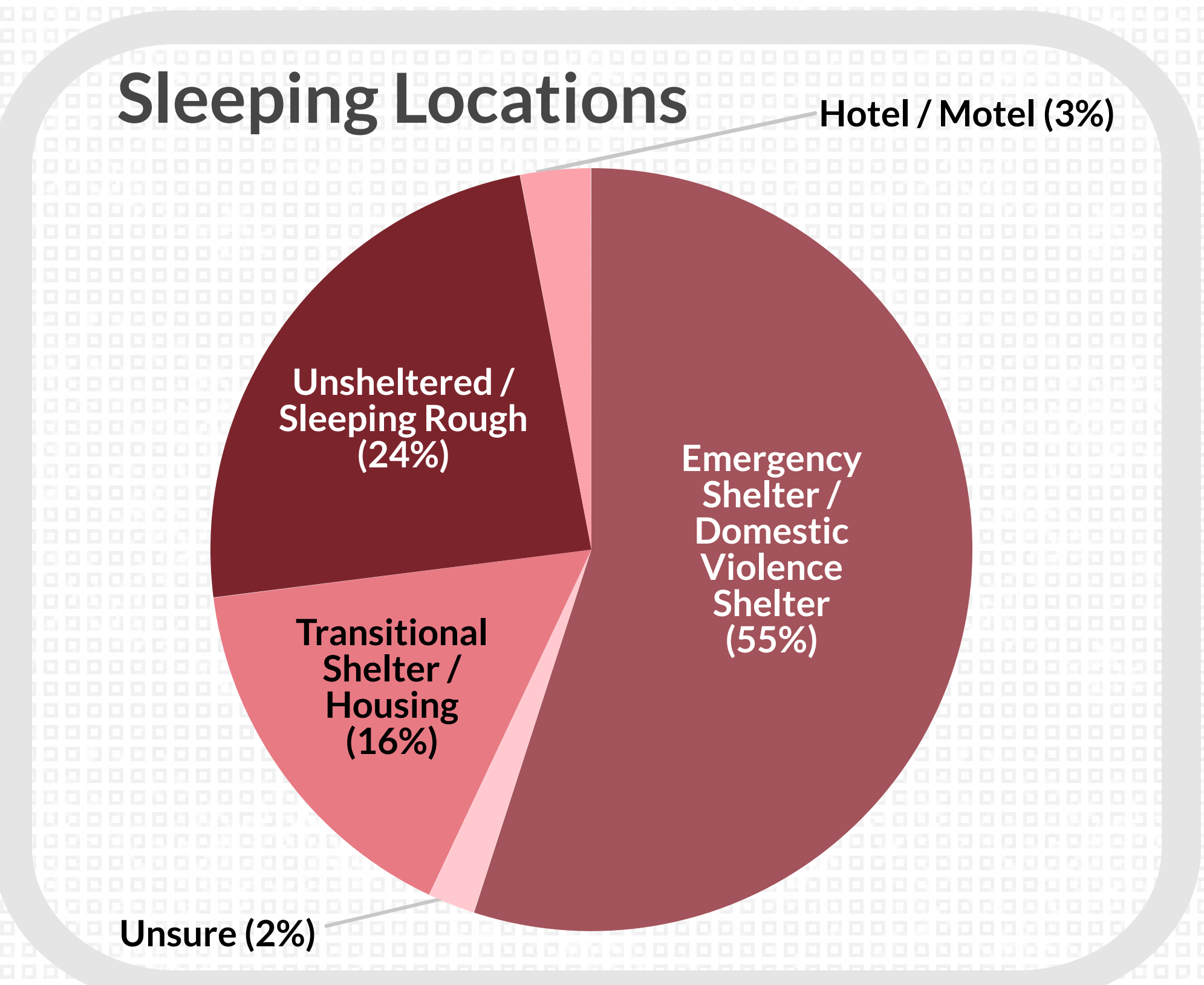
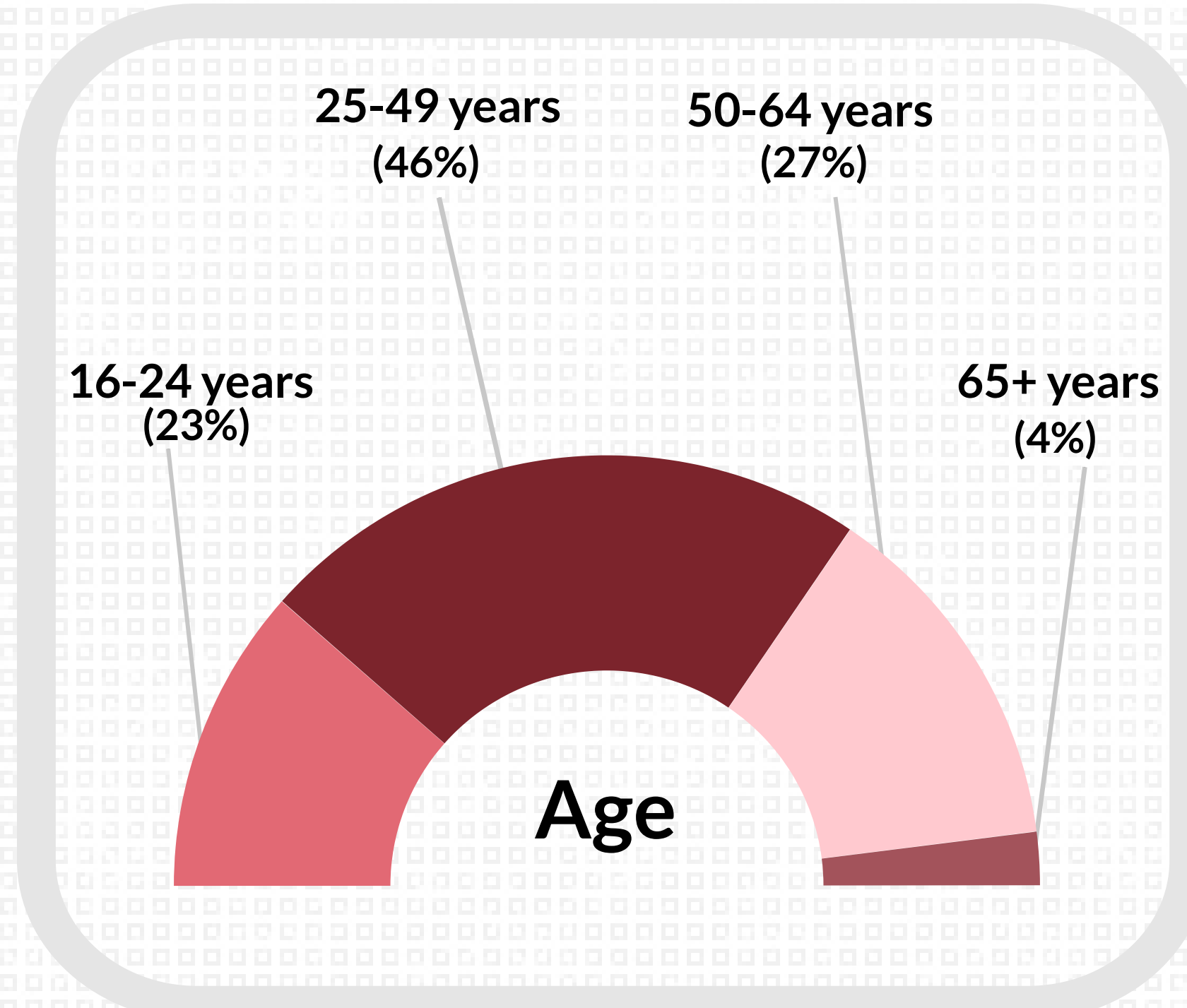
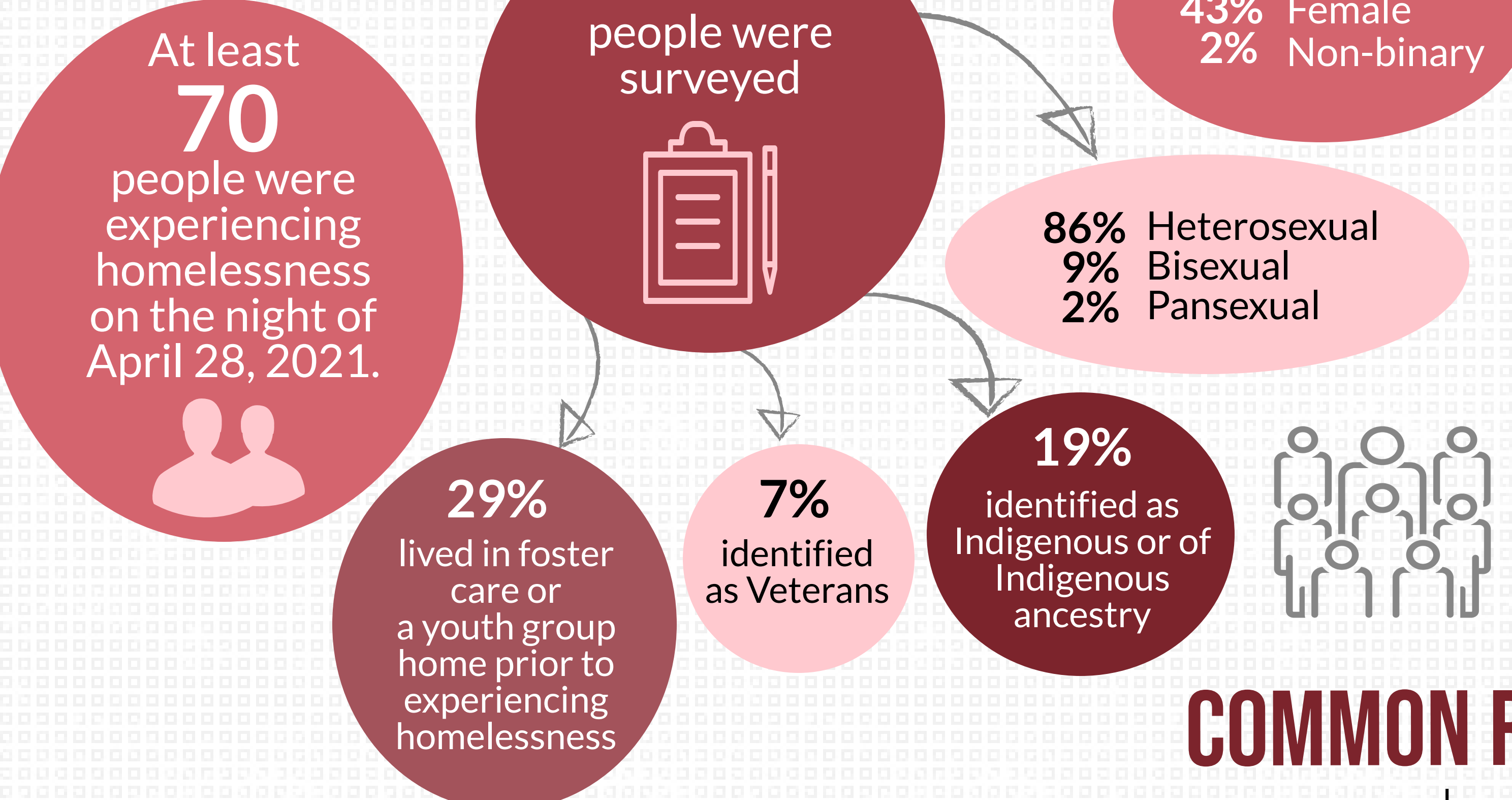
EVERYONE COUNTS 2021: SAINT JOHN

Highlights from the Point-in-Time Homelessness Count

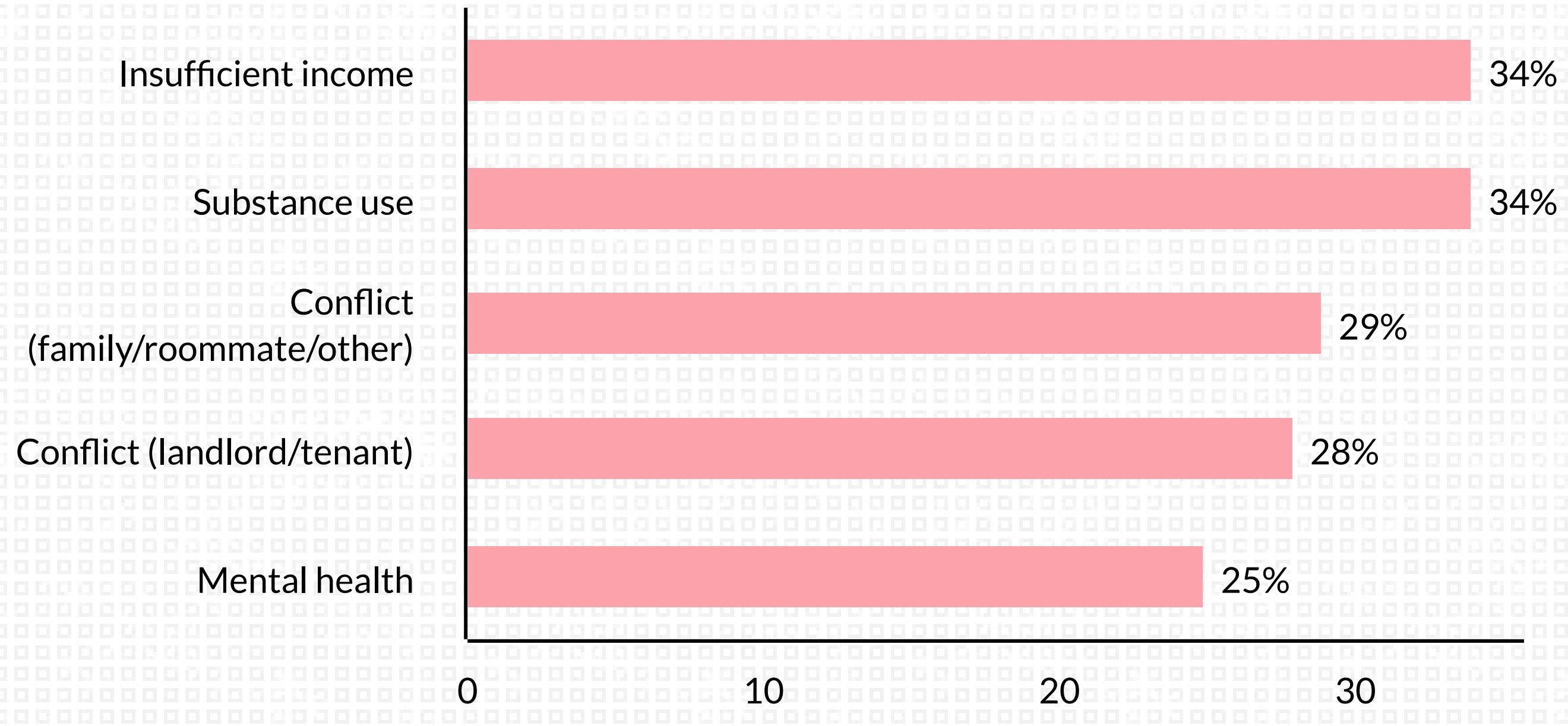


A Point-in-Time (PiT) Count is used to capture a current snapshot of homelessness in a community. It involves a tally of people experiencing homelessness at emergency and domestic violence shelters, transitional housing, and unsheltered locations. It also involves a survey that sheds light on local lived experiences of homelessness and service needs. The findings help communities track progress in reducing homelessness. A PiT Count is limited as it occurs at a specific moment in time and cannot capture hidden homelessness (e.g., couch surfing). The following data is derived from a PiT Count conducted in Saint John in April 2021.

DEMOGRAPHICS



COMMON REASONS FOR HOUSING LOSS



COMMON HOUSING CHALLENGES

