

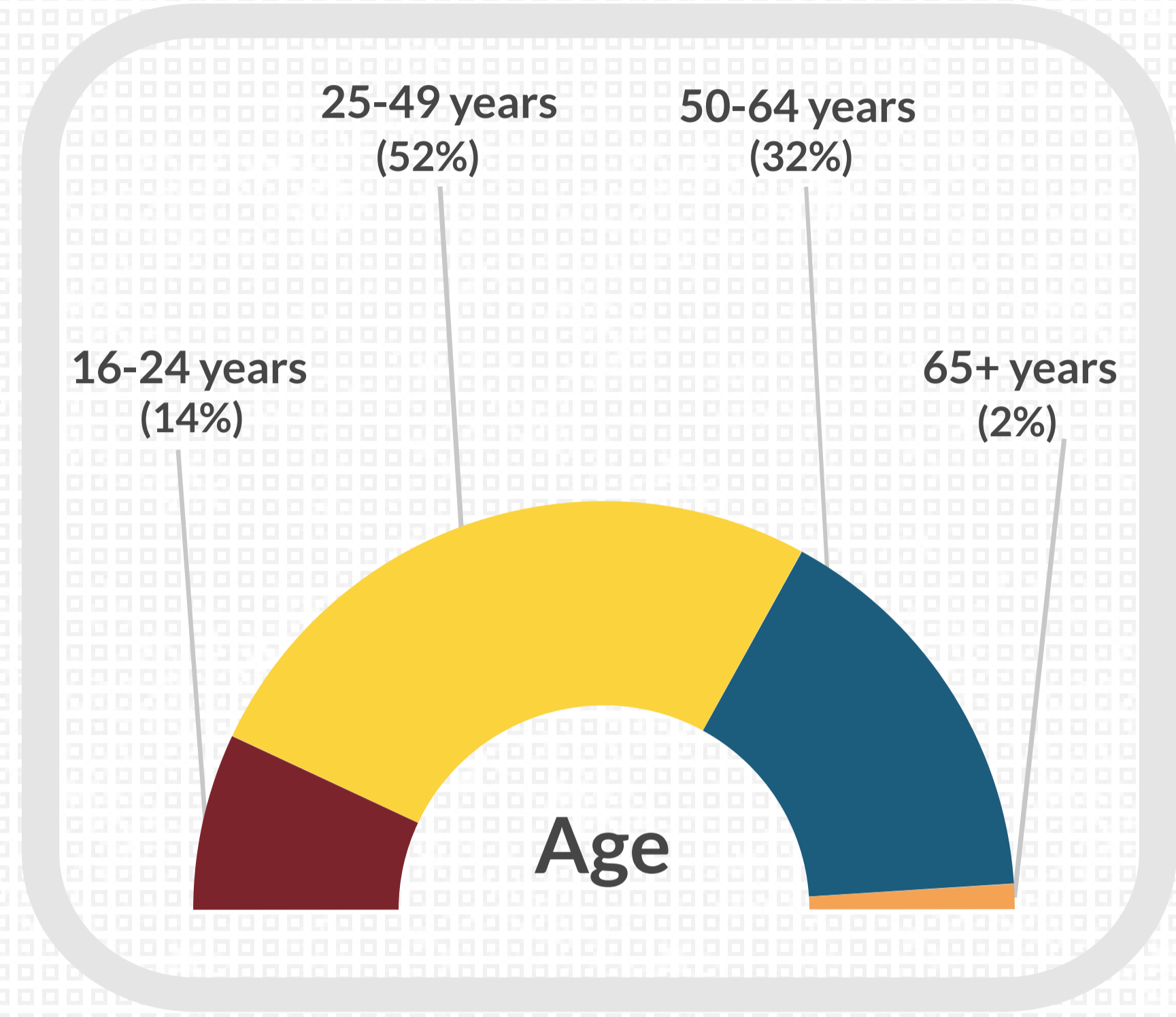
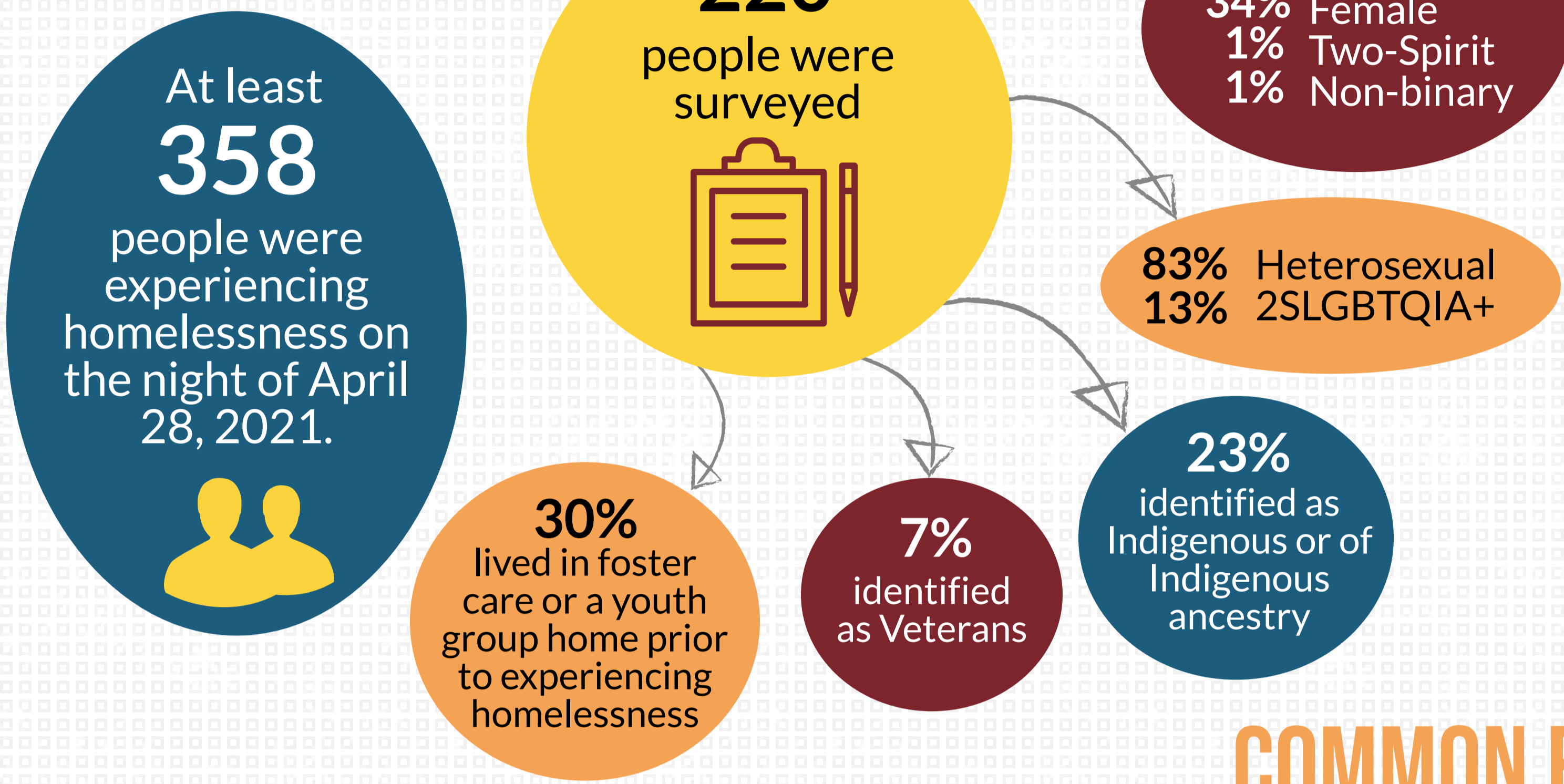
EVERYONE COUNTS 2021: TRI-CITY



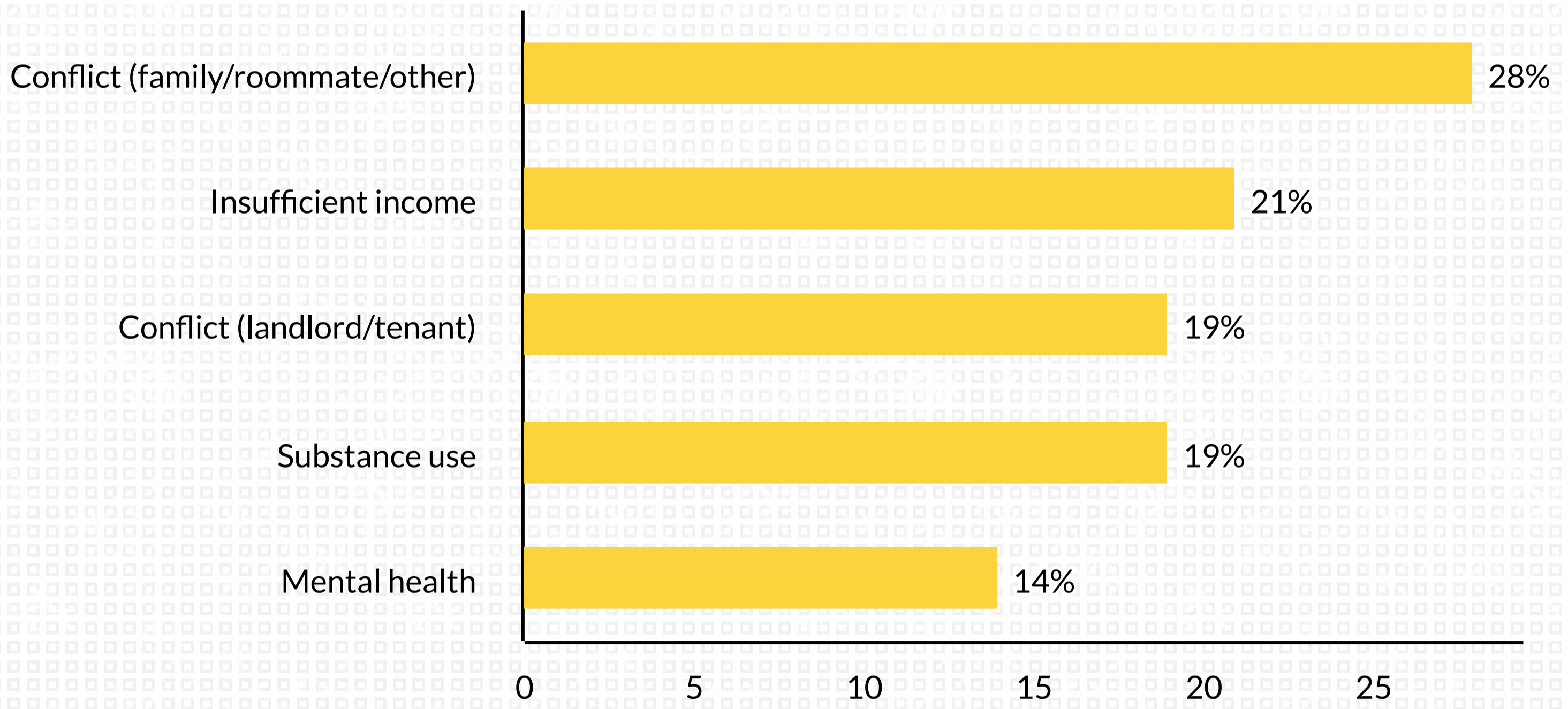
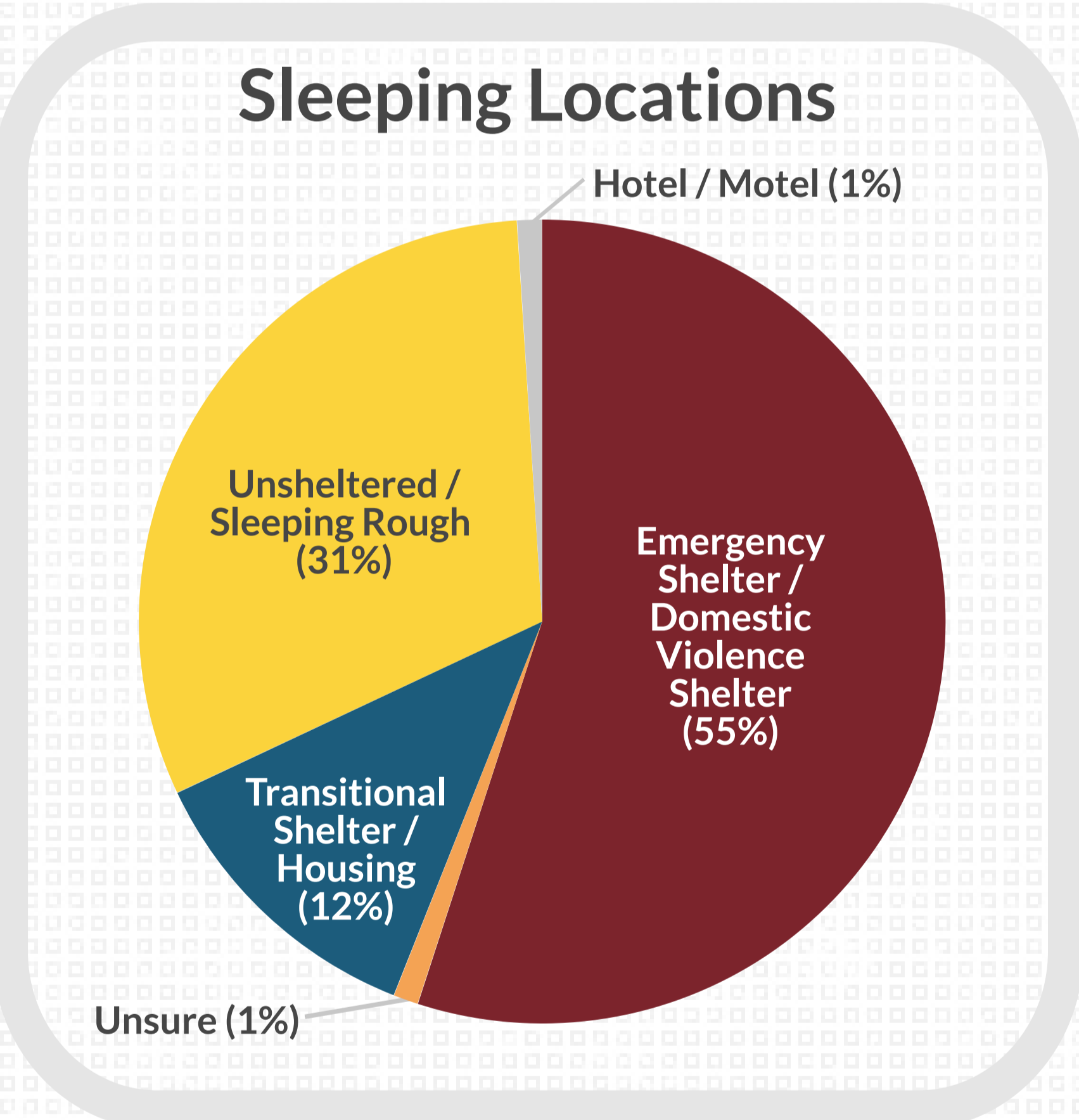
Highlights from the New Brunswick Point-in-Time Homelessness Count

A Point-in-Time (PiT) Count is used to capture a current snapshot of homelessness in a community. It involves a tally of people experiencing homelessness at emergency and domestic violence shelters, transitional housing, and unsheltered locations. It also involves a survey that sheds light on local lived experiences of homelessness and service needs. The findings help communities track progress in reducing homelessness. A PiT Count is limited as it occurs at a specific moment in time and cannot capture hidden homelessness (e.g., couch surfing). The following is combined data from PiT Counts conducted in Fredericton, Moncton, and Saint John in April 2021.

DEMOGRAPHICS



COMMON REASONS FOR HOUSING LOSS



COMMON HOUSING CHALLENGES

